



CHORISTER AND PARENT HANDBOOK 2011 - 2012

585 East Colorado Boulevard, Pasadena, CA 91101-2036

Telephone: 626.793.4231 | Fax: 626.793.0173

E-mail: info@lachildrenschorus.org

Website: www.lachildrenschorus.org



Fall 2011

Dear LACC Choristers and Families:

Welcome to the 2011-2012 season of the Los Angeles Children's Chorus! The year ahead is filled with many opportunities and experiences. We look forward to sharing the joy of song with you all!

This year children will be introduced to a wide variety of musical cultures, including the rich traditions of South Africa alongside the mature expression of the Western canon as experienced through two symphonic works by Gustav Mahler. Many of our members will explore the voice of a new Icelandic composer, Daníel Bjarnason, as we sing the world-premiere of his work for treble choir and orchestra. This work, inspired by Shakespearean texts, will be conducted by world-renowned conductor, James Conlon, Music Director of LA Opera.

LACC will perform at major venues like Walt Disney Concert Hall, and a first for LACC, the Shrine Auditorium where we will join with Maestro Gustavo Dudamel, many choirs from the Southland, the Simón Bolívar Symphony Orchestra of Venezuela to perform Mahler's remarkable Symphony No. 8.

We look forward to performing Puccini's beloved "La Bohème" with LA Opera at the Dorothy Chandler Pavilion in the spring. The summer will be filled with the songs of South Africa as Concert Choir travels to visit this unique country with a fascinating choral tradition.

Along with these remarkable experiences, we are eager to develop guide the development of each child's voice, building their musical understanding, supporting them as they grow, and forming a community of encouragement and care.

I look forward to sharing the year ahead with you all!

With excitement!

A handwritten signature in black ink that reads "Anne Tomlinson". The signature is fluid and cursive.

Anne Tomlinson
Artistic Director

TABLE OF CONTENTS

I.	MISSION STATEMENT	5
II.	GENERAL INFORMATION.....	5
A.	MEMBERSHIP.....	5
B.	CHORUS CONTACT INFORMATION.....	5
III.	LOS ANGELES CHILDREN'S CHORUS HISTORY	6
IV.	PROGRAM DESCRIPTION	7
A.	REHEARSALS AND MUSICIANSHIP CLASSES	7
B.	CHOIR RETREATS	8
C.	PERFORMANCES	8
D.	PROGRESS REPORTS	8
E.	PROFESSIONAL PERFORMANCE OPPORTUNITIES.....	8
V.	COMMUNICATION.....	9
A.	HANDOUTS.....	9
B.	TURNING IN PAPERWORK, FORMS, AND PAYMENTS	10
VI.	WHAT IS EXPECTED OF CHORISTERS.....	10
A.	PARTICIPATION	10
B.	ATTENDANCE.....	11
C.	PUNCTUALITY	12
D.	BEHAVIOR AGREEMENT	12
E.	ELECTRONIC DEVICE POLICY.....	13
F.	REHEARSAL DRESS CODE.....	13
G.	CONCERT PREPARATION AND DEPARTMENT.....	13
H.	DRESS UNIFORM REQUIREMENTS	14
1.	<i>Casual Uniform Requirements</i>	14
2.	<i>What to Wear When</i>	14
3.	<i>Used Uniforms</i>	14
I.	MUSIC	15
VII.	INFORMATION FOR PARENTS.....	16
A.	CHORISTER SAFETY AND WELL-BEING.....	16
B.	COSTS.....	16
1.	<i>Registration and Tuition Fees</i>	16
2.	<i>Tour and Day Trip Fees</i>	16
3.	<i>Other Costs</i>	16
C.	PAYMENT OF FEES	17
D.	FINANCIAL ASSISTANCE	17
E.	REHEARSAL PROCEDURES	17
F.	TRIPS AND TOURS.....	18
G.	TRANSPORTATION.....	18
H.	CONTRACTED PERFORMANCES.....	18
I.	WORK PERMITS	18
J.	RECORDINGS AND PHOTOGRAPHY.....	18
K.	SOCIAL MEDIA GUIDELINES	19
L.	CHORUS FUNDRAISING	19
VIII.	LACC STRUCTURE AND STAFF	20
A.	CHORUS ORGANIZATIONAL STRUCTURE.....	20
B.	ARTISTIC STAFF BIOS.....	22
C.	2011 - 2012 BOARD OF DIRECTORS.....	25
D.	LOS ANGELES CHILDREN'S CHORUS STAFF.....	25
1.	<i>Artistic Staff</i>	25
2.	<i>Administrative Staff</i>	25
IX.	INDEX.....	26

Congratulations on being selected as a member of Los Angeles Children's Chorus! Your year ahead will be filled with glorious music, musical growth, opportunities to perform for enthusiastic and appreciative audiences, and new friendships. This handbook will inform you about the Chorus and make you aware of what you can expect from your LACC experience, as well as what is expected of you as a LACC chorister. Please read this handbook carefully and make sure your parents read it too!

I. Mission Statement

Los Angeles Children's Chorus provides choral music education of the highest quality to young people who represent richly diverse racial, economic, and cultural backgrounds. The program ignites a love of singing and nurtures the full expression of each individual's potential for artistic and personal excellence through the collaborative experience of choral music performance. Through the beauty of inspired and joyful singing, Los Angeles Children's Chorus brings the transformative power of music to communities throughout Southern California, the nation, and the world.

II. General Information

A. Membership

Los Angeles Children's Chorus includes approximately 350 choristers ranging in age from 8-18. The Chorus includes members from many diverse communities throughout the Los Angeles area. LACC has six choral ensembles in its core program: **Concert Choir, Chamber Singers, Intermediate Choir, Apprentice Choir, Preparatory Choir, and the Young Men's Ensemble**. First Experiences in Singing classes are offered for children ages six and seven. This year, we also begin a transitional experience from classes to ensembles through the First Experiences in Choral Singing Ensemble.

LACC's season runs from September through June. New choristers are selected at annual spring auditions and are generally placed in Preparatory Choir or Apprentice Choir. When there are openings in the Intermediate Choir, Concert Choir, or Chamber Singers, continuing choristers are evaluated and considered for advancement based on:

- ◆ Tone and vocal color
- ◆ Intonation and tuning
- ◆ Ability to read music and hold a part
- ◆ Attendance and working effectively at rehearsals
- ◆ Dedication, attitude and contributions to the Chorus
- ◆ Successful completion of current level of musicianship class

Choristers may expect to stay in each ensemble for two years or more. High school-aged girls in Concert Choir may be invited by the Artistic Director to audition for Chamber Singers. To be eligible, they must have completed two successful seasons in Concert Choir and passed the **Level 6** Musicianship class.

Repertoire appropriate to each choir's skill level is selected annually for each ensemble of the Chorus. Although emphasis is placed on musical education, core choirs also have opportunities to perform and travel.

B. Chorus Contact Information

Los Angeles Children's Chorus | 585 East Colorado Boulevard, Pasadena, CA 91101-2036

PH: 626.793.4231 | FAX: 626.793.0173 | E-MAIL: info@lachildrenschorus.org | WEBSITE: www.lachildrenschorus.org

Administrative Office Hours: Monday - Friday, 9:30 AM - 5:30 PM

Extended Office Assistance during Regular LACC Rehearsals:

Sunday, 4:00 - 8:00 PM; Monday and Tuesday, 5:30 - 8:00 PM

III. Los Angeles Children's Chorus History

Under the artistic direction of Anne Tomlinson, Los Angeles Children's Chorus has emerged as one of the nation's leading children's choruses, known for the superlative quality of its musical performances and the high caliber of its artistry. Founded in 1986, LACC now performs regularly with Southern California's most prominent performing arts organizations, at its own self-produced concerts, with other children's choruses, at choir festivals, and for appreciative community groups and organizations throughout the region and abroad.

Given its emphasis on and reputation for artistic excellence, LACC is in great demand to perform major choral, operatic, and orchestral works with high-profile professional ensembles. LACC has performed often with the Los Angeles Philharmonic in such works as Mahler's Third and Eighth Symphonies, Beethoven's Ninth Symphony, Bizet's *Carmen*, Puccini's *Turandot*, Orff's *Carmina Burana*, John Adams' *El Niño*, Mendelssohn's *Midsummer Night's Dream*, Stravinsky's *Persephone*, and Bernstein's *Mass* under conductors Gustavo Dudamel, Esa-Pekka Salonen, Andre Previn, Marin Alsop, and many others. LACC also received an invitation from Esa-Pekka Salonen to premier his *Dona Nobis Pacem*. The Chorus sings frequently with the Los Angeles Master Chorale, under the direction of Grant Gershon, and with the Hollywood Bowl Orchestra under the direction of John Mauceri, Leonard Slatkin and Bramwell Tovey. LACC also performs with the Pasadena Symphony and Pops, the Los Angeles Chamber Orchestra, and Southwest Chamber Music.

The Chorus enjoys a close relationship with LA Opera, appearing in numerous productions and world premieres, such as *La damnation de Faust*, *Die Frau ohne Schatten*, *Billy Budd*, *La Bohème*, *Pagliacci*, *Tosca*, *Midsummer Night's Dream*, *Otello*, *Carmen*, *Hansel and Gretel*, *Der Rosenkavalier*, *Queen of Spades*, *Werther*, *Turandot*, and the world premieres of *Grendel* and the children's opera *Fantastic Mr. Fox*.

In addition to its many contracted performances, LACC presents its own annual Winter and Spring Concerts. The Chorus performs pieces that range from established works by classical composers to contemporary arrangements of folk songs from around the world. The Chorus frequently presents new compositions written specifically for children's voices. Major works performed by LACC's Concert Choir include Britten's *Missa Brevis* and *Ceremony of Carols*, Faure's *Messe Basse*, and *Dancing Day* by John Rutter. In June 2000, LACC produced its first children's opera, Benjamin Britten's *Noye's Fludde* (Noah's Flood). Eighty choristers joined with the Orchestra da Camera of the Colburn School, three adult singer/actors, a professional stage director, choreographer, set designer, and costume designer to provide a memorable performance for the performers and audience alike.

In July 2007, LACC produced a milestone commission: a new choral opera created for LACC by composer Peter Ash and librettist Donald Sturrock, *Keepers of the Night*. Conductor Grant Gershon, director Corey Madden and renowned soloists Suzanna Guzmán, Malcolm MacKenzie, Lynette Tapia, and Lauren Libaw joined 65 LACC choristers for four performances of this world premiere production at the historic Alex Theatre in Glendale.

Concert Choir tours extensively across the United States and around the world. In previous seasons, Concert Choir has toured internationally to Scandinavia, China, Italy, Brazil, Austria, Hungary, Poland, the Czech Republic, Canada, and Australia. National tours have taken the children to Boston, New York, Washington DC, Alaska, Colorado, Chicago, and Indianapolis. In Summer 2006, Concert Choir was the featured choir at the Tuscany International Children's Chorus Festival.

Intermediate Choir takes a weekend tour every spring, traveling to cities throughout the western United States to visit and perform with other children's choirs. Apprentice Choir and Preparatory Choir enjoy day trips in the spring to visit and perform with other children's choirs. The Young Men's Ensemble and Chamber Singers may travel as well.

Chorus members have performed at special events during visits to Los Angeles by the Emperor and Empress of Japan, Great Britain's former Prime Minister Margaret Thatcher, Israeli Prime Minister Yitzhak Rabin, and on national television commercials, movie soundtracks, the Grammy Awards Show, and The Tonight Show. They performed at the opening of the Our Lady of the Angels Cathedral in Downtown Los Angeles and sang at L.A. City Hall for the first anniversary of 9/11. LACC is honored to have been named "2003 Artists of the Year" by the Los Angeles Opera League.

LACC has hosted visits by and performed with many other children’s choirs including the Drakensberg Boys Choir, Leningrad Children’s Choir, Toronto Children’s Chorus, Tapiola Choir and Vox Aurea of Finland, Dawn Children’s Choir of Moscow, American Boychoir, Carmina Slovenika, Phoenix Boys Choir, Phoenix Girls Chorus, Central California Children’s Choir, Lawrence Children’s Choir, Portland Symphonic Girlchoir, Pensacola Children’s Chorus, and Australian Girl Choir.

IV. Program Description

A. Rehearsals and Musicianship Classes

Regular rehearsals are held as follows in the Music Department of Pasadena Presbyterian Church (PCC):

CHOIR	Sunday		Monday		Tuesday
	MUSICIANSHIP	REHEARSAL	MUSICIANSHIP	REHEARSAL	REHEARSAL
Young Men’s Ensemble	4:45 - 5:15 PM	5:30 – 7:00 PM			
Chamber Singers		4:30 - 6:00 PM			
Concert Choir	5:30 - 6:00 PM	6:15 - 7:45 PM			6:15-7:45 PM
Apprentice Choir			6:00-6:30 PM	4:30-5:45 PM	
Intermediate Choir			5:15-5:45 PM	6:00-7:30 PM	
Preparatory Choir					4:30-5:45 PM

FIRST EXPERIENCES IN SINGING PROGRAM	Wednesday
	REHEARSAL / CLASS
First Experiences in Choral Singing Ensemble	4:30 - 5:30 PM
First Experiences in Singing – Level I	4:15 - 5:00 PM
First Experiences in Singing – Level II	5:15 - 6:00 PM
First Experiences in Singing – Level III	TBA

Most choristers attend one musicianship class per week. Exams are given at mid-term and at the end of the year to evaluate each chorister’s mastery of the material and skills taught.

Because so much music is learned in a short period of rehearsal time, it is essential that every minute of the rehearsal be used wisely. Choristers are expected to arrive in plenty of time to:

- ◆ Sign in, locate music folders, and put on nametags, if provided;
- ◆ Have a sharpened pencil;
- ◆ Arrange music in the order listed on the board;
 - ◆ Use restrooms before rehearsal, if needed;
 - ◆ Take their seats and be ready to sing at the start of rehearsal.

Each chorister is required to bring his/her LACC music bag, musicianship materials, music, a pencil, and a closed water bottle to each rehearsal, clearly labeled with the chorister’s name. Choristers are to take their labeled water containers home with them at the conclusion of each rehearsal.

If snacks are served, food and drinks are to be consumed in the hall during break time and trash should be placed in the trash containers provided. Food, beverages, and chewing gum are not allowed in the rehearsal room. As LACC is

a tenant of Pasadena Presbyterian Church, it is important that the PPC space is cared for and treated respectfully at all times.

At the end of rehearsal, Preparatory and Apprentice choristers are to place all of their music in their folders in an orderly fashion and return their music folders to the appropriate music crate — choristers may take music home only with permission from their Director. Intermediate Choir members may either store their music at PPC or take their music home for additional review and study. Concert Choir, Chamber Singer, and Young Men's Ensemble members are to take their music home with them after each rehearsal for continued study.

At dismissal time, choristers should plan to meet their parents in the designated dismissal area for their group. **Choristers and parents are reminded always to check the handout crates at the dismissal area for materials marked with the chorister's name before going home.** For safety reasons, choristers may not leave the dismissal area until a parent or other authorized adult has come for them.

B. Choir Retreats

Each fall the Chorus holds choir retreats. Retreats are an important way to develop understanding of the season's repertoire, form choir friendships, and have fun! The retreat schedules include individual choir rehearsals, combined rehearsals, recreation time, and meals. The retreats are held in the Los Angeles area at a facility chosen for both rehearsal and recreational needs. For Apprentice and Intermediate Choristers, the retreat is a day-long event. For Concert Choir, the retreat takes place over a full weekend. Cost of the retreat is included in the annual tuition fee and attendance is required. Chamber Singers and the Young Men's Ensemble usually hold half-day retreats. Preparatory Choir usually holds a mini-retreat during the year.

C. Performances

LACC's major self-produced concerts for the 2011 | 2012 season are:

WINTER CONCERTS Sunday, December 4, 2011, at 7:00PM at PPC

Concert Choir, Intermediate Choir, and Chamber Singers

Sunday, December 11, 2011, at 7:00PM at PPC

Concert Choir, Young Men's Ensemble, and Apprentice Choir

SPRING CONCERTS Saturday, May 12, 2012, at 4:00 PM at PPC

Concert Choir, Chamber Singers, Intermediate Choir, Apprentice Choir

Sunday, May 13, 2012, at 7:00 PM at PPC

Concert Choir, Chamber Singers, Intermediate Choir, Apprentice Choir, and Young Men's Ensemble

Preparatory Choir will present a Spring Concert for family and friends in April 2012.

Other performances may involve one or more ensembles singing independently or in collaboration with other musical organizations in various locations throughout Los Angeles. LACC is often invited to provide singers for community events, at schools and retirement homes, or at meetings of civic and music organizations.

D. Progress Reports

At mid-year, each chorister is evaluated on the basis of his/her vocal development and mastery of the musical repertoire. A progress report is sent home to parents. At year-end, an evaluation of vocal mastery, musicianship skills, and attendance record will determine each chorister's placement for the next season. Parents are encouraged to call their child's Choir Director at the Chorus office if they have any special concerns about their child's progress at LACC.

E. Professional Performance Opportunities

LACC has a long and distinguished history of performing with the Los Angeles Opera (LAO), Los Angeles Philharmonic (LAP), Los Angeles Master Chorale (LAMC), and many other renowned performing arts organizations.

These institutions desire to work with LACC for its musical excellence, professionalism and the technical ability of its choristers.

The opportunities for Los Angeles Children's Chorus choristers to participate in professional performances with major performing arts organizations in our city are unparalleled. Additionally, choristers work closely with internationally regarded music and stage professionals — conductors, directors, singers, and instrumentalists. Choristers learn to deport themselves in a professional environment where musical performance and behavior of the highest order is expected at every moment. Through this experience, children grow as musicians and as individuals, gaining a great deal of poise and self-confidence.

Los Angeles Children's Chorus enjoys an international reputation for excellence in professional performance. The organization's reputation is greatly enhanced through these opportunities.

How are members of LACC selected for operas?

Choristers are selected for participation for a variety of reasons. LAO dictates the exact number of LACC singers that are required for each production. They also give specifics regarding vocal abilities, gender, height, age, physical measurements (as many costumes are owned by the company and used repeatedly), as well as vision requirements and sometimes hair color and length. (Choristers who are more than five feet tall may only be called when there is a need for backstage singing as they do not provide enough height contrast with adult singers on stage to be visually and dramatically effective.) LACC's conducting staff reviews LAO requests and mutually determines which choristers are invited to audition. LACC considers a chorister's commitment to the core program, reliability, vocal and physical health, physical agility, and eagerness to learn as demonstrated in regular LACC rehearsals. Casts may contain both experienced and new choristers. Families should consider their child's academic standing, physical stamina, and current level of involvement in other activities when weighing their child's desire and ability to participate.

How are choristers selected for participation with the Philharmonic, the Master Chorale, and other arts presenters?

Each request for collaboration with major arts presenters is reviewed carefully by the artistic staff to ensure that the Chorus can meet the presenter's performance expectations. Presenters determine the number of singers needed to ensure musical success. The artistic staff carefully studies the music and determines which singers best match the musical demands of the work. Discussions are also held to determine the level of personal deportment needed for each environment. Conductors review the musical and behavioral readiness of singers as demonstrated through chorister participation in LACC's core program. When a full ensemble is invited to perform, LACC expects that all members will participate and will clear their calendars of any conflicts. Discussions regarding participation and attendance where there is an unavoidable conflict must be held as soon as possible between the parent/chorister and the conductor. LACC parents/choristers are to initiate this conversation. If a smaller number of singers is needed, invitations that include clear rehearsal and performance expectations are extended to choristers. All rehearsals and performances called by major arts presenters are mandatory. At times, additional LACC preparatory rehearsals will be called. Choristers are expected to participate in these additional rehearsals.

V. Communication

A. Handouts

LACC is an active organization of six choirs which take part in a full season of rehearsals and lessons, self-produced concerts and collaborative performances, and other performance opportunities. As such, LACC's schedule of rehearsals and performances is subject to change. **It is essential that choristers and parents carefully read all memos that are distributed at rehearsals by the Directors and other staff.** Memos will provide updates about rehearsals, performances, tours, fundraisers, and other information of importance and interest. Memos should be retained in chronological order of distribution. Choristers are encouraged to place memos in a three-ring binder with the most recent handout on top. From time to time, communications regarding rehearsals and performances are sent

via email. All handouts are available on LACC's website. See below for instructions on how to access the handouts. **It is essential that we have a correct email address for your family.**

Choristers are responsible for keeping their own up-to-date rehearsal and performance schedules. As the date of each performance or event approaches, detailed schedules for the event outlining rehearsal times, performance times, and uniform requirements will be distributed to all choristers. Performances that are open to parents will also be noted on handouts. If tickets are required for a performance, that information will also be noted. *Handouts prepared by parent volunteers must be approved in advance by LACC staff.*

If you miss a rehearsal or forget to pick up your handouts after a rehearsal, YOU, the chorister, are responsible for obtaining any missed handouts and memos.

To access your handouts, visit the LACC website at www.lachildrenschorus.org, click on the **Members** tab at the top or the page. On the Members page,

1. **enter** the handouts access word, "handouts",
2. **select** the choir(s) whose handouts you want to access,
3. **click** on the "Show Handout List" button

B. Turning in Paperwork, Forms, and Payments

If a handout includes a tear-off form requesting information, each chorister and/or family is asked to respond promptly. Forms and paperwork should be placed in the "in-basket" at rehearsal (located on the sign-in table), handed directly to a Chorus Manager, or taken upstairs to the LACC office. Please do not give forms or other paperwork to the conductors.

If you are handing in sensitive, personal, or valuable documents (e.g., passports, work permits, or health forms), please deliver the documents directly to a Chorus Manager or upstairs to the office staff. Please do not give conductors, other staff, or parent volunteers sensitive or valuable documents.

When making a payment to LACC for events, activities, tours, tuition, or special clothing orders, you may present it in person to the office staff, mail a check to the LACC office (please do not mail cash), or place your check in an envelope in the "in-basket" at rehearsal. *Checks and credit card payments are the preferred form of payment at LACC.* Parents, if you need to pay in cash, please deliver cash in person to the office staff so a staff member may provide you with a receipt. When writing a check to LACC, please note your chorister's name and a brief description of the payment in the memo section of the check. Please make checks payable to: "Los Angeles Children's Chorus" or "LACC."

VI. What Is Expected of Choristers

A. Participation

Upon joining LACC, choristers are asked to commit to a full academic year (September through June) of active membership. Mastery and refinement of music comes only through regular practice by all choristers. Furthermore, the Chorus' "sound" depends on a solid group with enough voices to cover all choral parts. In Concert Choir, for example, most pieces are sung in three or four treble parts. If choristers were to drop out during the year, the quality of the whole choir suffers.

Intermediate and Concert Choir choristers attend musicianship class prior to rehearsal; Apprentice and Young Men's Ensemble members attend musicianship class after rehearsal. In all cases, **choristers are expected to be in their classroom seats and ready to work at the beginning of their scheduled class time.** Choristers are also expected to maintain proper classroom behavior, fully participate in all class activities, and complete a weekly homework assignment to bring with them to class the following week.

Choristers who choose not to continue the following year are requested to schedule an exit interview with their Director to discuss their experience with the Chorus and to receive input on their choral development.

B. Attendance

Due to the dedicated work of LACC's choristers over the years, the Chorus has earned a reputation in the musical community for the superior quality of its sound. To sustain and expand LACC's reputation takes the dedicated commitment of every chorister. Choristers must make a commitment to attend all rehearsals, musicianship classes and LACC performances, as well as participate in additional performance opportunities, as necessary.

Each rehearsal and class is very important. Choristers are challenged at a high level each week and the ensembles require each chorister to be present and learning together to create LACC's hallmark sound. **Attendance at all of your choir's rehearsals, performances, and musicianship classes is required.** Consistent attendance assures that choristers are comfortable with their music, prepared to perform, and fulfilling their commitment to their ensemble.

Each choir within the LACC organization is given a **season calendar** in the early fall. This calendar includes, to the best of LACC's knowledge at that time, rehearsals, classes, and performances for the upcoming season. Additions to the season calendar will be communicated as soon as possible via handouts, e-mails, or phone calls.

Choristers are expected to **participate in each performance** listed on their ensemble's calendar. Full participation ensures the continuance of LACC's reputation for choral excellence. If there is an unavoidable conflict, the chorister and/or parent must speak with his/her ensemble's Director as soon as possible. Should a chorister miss a performance, the consequence will be that he/she, depending on the reason for the absence, may be asked not to participate in a future performance.

Excessive absenteeism is defined as follows:

Young Men's Ensemble

- ◆ More than 1 absence in the Fall Term (Sept. - Dec.) or
- ◆ More than 2 absences in Spring Term (Jan. - May/June)

Preparatory Choir

- ◆ More than 1 absence in the Fall Term (Sept. - Dec.) or
- ◆ More than 2 absences in Spring Term (Jan. - May/June)

Apprentice and Intermediate Choirs

- ◆ More than 2 absences in the Fall Term (Sept. - Dec.) or
- ◆ More than 3 absences in Spring Term (Jan. - May/June)

Chamber Singers

- ◆ More than 2 absences in the Fall Term (Sept. - Dec.) or
- ◆ More than 3 absences in Spring Term (Jan. - May/June)

Concert Choir

- ◆ More than 5 absences in the Fall Term (Sept. - Dec.) or
- ◆ More than 6 absences in the Spring Term (Jan. - May/June)

Choristers are not considered absent when missing a rehearsal due to the observance of a religious holiday celebrated as a part of their family's faith practice.

Being absent from the Retreat counts as one absence for Apprentice and Intermediate Choirs, and two absences for Concert Choir.

There are certain **rehearsals** which are critical to the success of the Chorus. These rehearsals, usually the last few before a performance, are **MANDATORY** on your schedules.

MANDATORY rehearsal means no excuses can be accepted. If a chorister is unable to attend a mandatory rehearsal, he/she and his/her parents must speak to the Director of the child's ensemble to discuss the reason for the conflict. This conversation should happen as soon as the conflict arises and no later than two weeks before the

mandatory rehearsal unless there is a last-minute emergency. The Director will notify the family of the consequence of missing the mandatory rehearsal. Choristers missing mandatory rehearsals may not be allowed to sing in the performance. Mandatory rehearsals are most often in conjunction with LA Opera, Los Angeles Philharmonic, LA Master Chorale, and other major arts presenters' performances.

For other rehearsals and classes, the chorister or parent should contact a Chorus Manager with a full explanation of the reason for the absence as far in advance as possible. You may contact a Chorus Manager by calling the LACC office, by sending an e-mail, or by letter or note. Although Chorus Managers appreciate verbal notifications of upcoming absences, a phone message, an e-mail message, or a written note is required in order to officially notify a Chorus Manager of an absence.

The only reasons for absence are serious illness, a major conflict with a school academic event or trip, or family emergency. Any extra curricular activity which would conflict with LACC performances, rehearsals, or musicianship classes must be discussed with the chorister's Director prior to the rehearsal.

Choristers who exceed the limitations will be placed on attendance probation and may be asked to not sing in a performance. Additionally, they may be asked to attend make-up rehearsals. A chorister's attendance record is also one of the factors considered for participation in special performances, tours, and promotions to higher level ensembles.

By accepting this responsibility, you will have the opportunity to learn and realize your greatest musical potential through all the programs offered by the Chorus. Failure to meet these obligations may result in loss of performance opportunities and/or Chorus membership as determined by the Artistic Director. Frequent absences from musicianship classes may result in repetition of that class the following season, and may affect the chorister's ability to progress through LACC's program.

The sign-in sheets at rehearsals and performances are the basis for LACC's attendance records, so it is essential that each chorister personally sign-in at every rehearsal and performance. A chorister may not receive credit for attendance at a rehearsal for which he/she did not sign in. Choristers must not ask or allow other choristers to sign-in for them.

C. Punctuality

If a chorister will be late to a rehearsal or must leave a rehearsal prior to its scheduled dismissal time, the chorister or a parent must notify a Chorus Manager as far in advance as possible. Permission for late arrivals and early departures is at the discretion of the Choir Director.

Choristers and parents, please bear in mind that late arrivals and early departures are noted on sign-in sheets and documented in attendance records. Leaving a rehearsal early or arriving late may count as up to ½ of an absence.

It is important that choristers are picked up promptly at the end of rehearsals, classes, performances, bus trips, and tours.

D. Behavior Agreement

Los Angeles Children's Chorus is an artistic community built on trust and mutual respect. The Chorus believes that self-discipline is more valuable than imposed discipline. It is the responsibility of each chorister to follow established rules, not only to enable the Chorus to achieve its goals, but also so individual needs can be met and respected. The Chorus expects good conduct and behavior from every chorister.

Upon enrollment, each chorister assumes responsibility for following the prescribed rules. Additionally, the Chorus expects that parents will support their child in this effort and will also support the Chorus by respecting the rules. LACC choristers must take responsibility for their actions at all LACC functions and singing opportunities made available through the Chorus. The behavior of each chorister impacts the effectiveness and reputation of the Chorus as a whole. Any chorister whose actions demonstrate a failure to meet his/her responsibilities may be asked to leave LACC.

If a chorister inadequately handles his/her own responsibilities in regard to his/her proper conduct, the chorister will be referred to his/her Director or the Artistic Director, who will consider and decide upon the chorister's continued eligibility for membership in LACC. In this way, the Chorus may make its own determination of what it considers to be in its own best interest, as well as in the best interest of the chorister. The Artistic Director makes all final decisions regarding a chorister's place in the Chorus.

Possession or use of illegal substance, such as drugs, alcohol, or tobacco at LACC events or LACC-related functions will, in all likelihood, result in dismissal from the Chorus.

Infractions that may lead to suspension, and, if repeated, dismissal from the Chorus:

- ◆ Dishonesty
- ◆ Theft
- ◆ Physically or verbally abusive behavior
- ◆ Destruction or abuse of property or rehearsal/performance facility
- ◆ Possession of an object deemed dangerous to self or others
- ◆ Lack of a cooperative, positive attitude toward the standards of the Chorus
- ◆ Disrespect for Directors, musicianship teachers, accompanists, administrators, other choristers, chaperones, parent assistants, or any other individual involved with a Chorus activity
- ◆ Excessive unexcused absences from rehearsals and/or performances.

E. Electronic Device Policy

Los Angeles Children's Chorus recognizes the importance of children carrying phones, yet it must insure a rehearsal environment which is not interrupted by electronic devices. Children who bring phones or other electronic devices to rehearsals and musicianship must turn them off during rehearsals and classes. Children may not bring any electronic device to stage of any performance. Should a child use a device during a rehearsal or musicianship class, the device will be held by the rehearsal assistant until the close of rehearsal. Should a child bring or use a device on stage of any performance, the child, parents, and the child's conductor will meet to discuss the appropriate consequence.

F. Rehearsal Dress Code

Dress and appearance play a role in creating a respectful, positive, and productive learning environment. Choristers are asked not to wear items on the following list:

- ◆ Any clothing with inappropriate logos or writing such as profanity, violence or sexual content
- ◆ Any clothing worn so that undergarments show
- ◆ Halter tops, bare midriff tops, or backless tops
- ◆ Slippers or pajamas

G. Concert Preparation and Deportment

The image LACC presents at rehearsals, performances, and tours is very important. Below are tips about how choristers can best represent the Chorus.

- ◆ Choristers must come to all major rehearsals and performances well rested. Performing is physically demanding in much the same way as athletic events are demanding. To sing one's best, one must be rested, have eaten a light, nutritious meal, and have consumed 16 ounces of water 2-3 hours before the warm-up rehearsal. Dairy products and spicy foods should be kept to a minimum prior to singing.
- ◆ Families should avoid over-scheduling a child on major rehearsal or performance days.
- ◆ When traveling by bus with the group, choristers may be required to ride in silence or talk at a low whisper to ensure healthy voices for performing.
- ◆ Uniforms must be clean and neat. Choristers should be mindful of personal hygiene in regard to deodorant when necessary. No perfume please!

- ◆ A natural, healthy appearance is strongly encouraged.
- ◆ Heavy make-up and excessive jewelry are not to be worn (small non-light-catching earrings are permitted).
 - Hair should be back from the face. Clips, headbands, etc. should not catch light, and should match the hair color.
 - Clear or neutral color nail polish is acceptable.
- ◆ Remember that each child's conduct, appearance and contributions to the performance reflect on the entire Chorus.
- ◆ Choristers are responsible for providing their own uniforms. There are two uniforms: a dress uniform and a casual uniform. These must be purchased from the specified suppliers. Uniform costs are approximately \$100.

H. Dress Uniform Requirements

Dennis Uniform Company, located at 250 South Flower Street in Burbank off the 5 FWY (although the company is scheduled to move to Glendale October 2011), carries items for LACC dress uniforms. You may contact them at (800) 473-8130 or order from their website at www.dennisuniform.com. All dress uniforms (except Chamber Singer dresses) should be purchased from Dennis. Dennis Uniform Company will be present at LACC orientation.

Girls should purchase from Dennis Uniform Company a **knee-length** black skirt and white $\frac{3}{4}$ length sleeve blouse. LACC provides a ruffled bow pin which is worn with the dress uniform. The bows, which are worn with the girls' concert uniforms, are distributed and collected at each performance by LACC. To complete the uniform, girls wear black tights and plain black, dress shoes with no more than a one-inch heel. No hair ribbons or ornaments, colored headbands, visible jewelry, nail polish other than clear or neutral, or heavy make-up are to be worn with the uniform.

Boys should purchase from Dennis Uniform Company black twill pants and a black and white striped tie. Boys may purchase from Dennis or elsewhere a white oxford-cloth, button-down, long sleeved shirt. To complete the uniform, boys wear a black belt, dark socks and black dress shoes. Striped ties, worn by boys in Preparatory, Apprentice and Intermediate Choirs, are available from the LACC office.

Concert Choir members **only** should purchase a red sweater vest from Dennis Uniform. The vest is worn with the dress uniform by both boys and girls.

Chamber Singer dresses are purchased by the choristers and ordered by the Chorus. They should be hemmed to the ankle break three inches from floor in shoes. With their blue dresses, girls should wear their treble clef necklace, black opaque hose, and black shoes with no more than a two-inch heel.

1. Casual Uniform Requirements

The LACC casual uniform is a red LACC logo T-shirt worn with long blue jeans or hemmed denim shorts (no shorter than four-inches above the knee), as specified for a given performance. Jeans should be hemmed above heel, fitted at the waist, and should not have tears, holes or decorations. With the casual uniform, choristers should wear white, black or grey sneakers with white socks. The T-shirts are available for purchase in the LACC office. A red hooded sweatshirt with the LACC logo is also available for purchase in the LACC office.

2. What to Wear When

LACC dress or casual uniforms are worn whenever LACC is seen professionally — for performances, outside rehearsals, whenever the group is traveling, or for other scheduled events attended by a group of choristers. Always check event schedules for uniform requirements for that particular rehearsal or performance. Uniforms are not required for regular rehearsals or for dress rehearsals for LACC's self-produced concerts (although please see the dress code as described in Section D above). All uniform pieces should be purchased by mid-September.

3. Used Uniforms

If any part of a uniform has become too small (even the shoes!), please bring it to the LACC office so another chorister can use it. Used uniforms are offered for an appropriate donation as they become available.

I. Music

Choristers assume full responsibility for taking care of their music when it is issued to them. Each chorister is given a number which is theirs for the duration of the Chorus year. This number appears on the chorister's music and music folder. **Choristers who take their music home are required to bring their music folders to all rehearsals.**

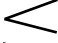
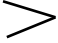




Concert Choir and Chamber Singer members are also given performance folders with their names on them. These should be kept with their music, for use as specified by the Director at performances throughout the year. Lost performance folders must be replaced by the chorister and may be purchased from the LACC office at a cost of \$8.00 per folder. Lost musicianship materials for Levels I, II and IV will be replaced at a cost of \$15.00.

Music should be kept neatly in folders. It is never to be folded or creased. If a chorister has a problem with his/her music, or if music is missing from a folder, he or she should speak to the parent assistant at the rehearsal room or see a staff member in the office before rehearsal.

Music remains the property of LACC. It is the responsibility of each chorister to return music when it is called for by the Director or at the end of the season. LACC reserves the right to charge for lost or damaged music.

Marking music is a tradition among good choral singers; it is a way of recalling the Director's instructions or reminding oneself of how to perform a particular part of a piece. Markings in music should be in pencil only (never in pen), and must be neat and legible for future choristers' use. Doodling on music is not acceptable!

Choristers should understand the following musical markings and be able to use them in their musical scores during rehearsal to help them remember the Director's instructions.

Marking	Meaning
ppp	<i>pianississimo</i> – very, very soft
pp	<i>pianissimo</i> - very soft
p	<i>piano</i> - soft
mp	<i>mezzo-piano</i> - medium soft
mf	<i>mezzo-forte</i> - medium loud
f	<i>forte</i> - loud
ff	<i>fortissimo</i> - very loud
	<i>crescendo</i> - getting gradually louder
	<i>decrescendo</i> - gradually softer
rit.	<i>ritardando</i> - gradually slower
rall.	<i>rallentando</i> - gradually slower
accel.	<i>accelerando</i> - gradually faster
•	<i>staccato</i> - detached
	<i>legato</i> - very smooth with each note connected to the next
	no breath
,	breath mark; breathe at this place
→	turn page quickly/look carefully/sudden change coming up
	two parallel lines separate one system from another if they are too close
<	accent/sing strongly/firmly
	<i>fermata</i> - hold/pause/wait/watch
	watch the director for a special cue

VII. Information for Parents

A. Chorister Safety and Well-Being

LACC is committed to the safety and well-being of its choristers. Accordingly, LACC has policies and procedures in place to guard against misconduct by ensuring that choristers will at all times be in the presence of at least two adults during the course of instruction at LACC or at an LACC sponsored event.

Any improper conduct on the part of a staff member or volunteer in the course of instruction or supervision is to be reported by the chorister or his/her parent/guardian to the Chorus Manager or Director or LACC's Artistic Director or Executive Director. This may be done in person or in writing. The person to whom the behavior is reported is required to submit a written report to the Executive Director (or LACC's Board of Directors should the Executive Director be the subject of the complaint). The report will be investigated and a written response will be given to the chorister, parent, or guardian registering the complaint. Other actions will be taken as necessary. A copy of LACC's Employee Handbook, which outlines LACC's organizational policies, is available by request.

B. Costs

1. Registration and Tuition Fees

Los Angeles Children's Chorus families reserve a place in the program for the upcoming season by paying a non-refundable **Tuition Deposit** of \$100 and signing a **Tuition Agreement Form**, both to be returned no later than July 31st.

The annual tuition fee may be paid by cash, check or credit card in the following ways:

- ◆ Full tuition at the beginning of the Chorus year.
- ◆ Half tuition on 9/1/11 and 1/1/12
- ◆ Quarterly tuition due on 9/1/11, 11/1/11, 1/1/12, and 3/1/12. A \$25 administrative fee is charged to use the quarterly payment plan. We must have either a credit card number on file to be charged on the quarterly dates or checks on file to be deposited on the quarterly dates.

Tuition, including the deposit, is \$1,860 for Concert Choir, \$1,590 for Intermediate Choir, \$1,510 for Apprentice Choir, \$1,210 for Chamber Singers, \$2,400 for Chamber Singers and Concert Choir, \$1,525 for Young Men's Ensemble and \$1,145 for Preparatory Choir.

Tuition is \$750 (including the deposit) for the First Experiences in Choral Singing Ensemble, \$224 for First Experiences in Singing – Level I, and \$295 for First Experiences in Singing – Levels II and III.

Families with delinquent payments are ineligible for continued participation in Los Angeles Children's Chorus programs until payments are current.

2. Tour and Day Trip Fees

Los Angeles Children's Chorus families reserve a place on a Tour/Day Trip by paying a **non-refundable Deposit** and signing a **Tour/Day Trip Participation Agreement Form**.

Tour/Day Trip fees and payment schedules are determined based on trip destinations and dates. A payment schedule with amounts and due dates is distributed at the time a Tour/Day Trip is announced.

Families with delinquent payments may jeopardize participation on Los Angeles Children's Chorus Tours/Day Trips. **Participants will not be allowed to depart on a tour/day trip with any outstanding payments due.**

3. Other Costs

Additional costs include concert tickets, uniforms and certain choir social activities and photos.

Chamber Singers members must have an additional 12 hours of vocal coaching (24 half-hour sessions) throughout the season. If a Chamber Singer member is currently studying with an LACC recognized teacher of *bel canto* technique for young voices, these lessons will serve as fulfillment of LACC's vocal coaching expectation. Those currently not studying privately need to schedule coaching dates and time directly with one of the LACC vocal coaches at mutually convenient times.

C. Payment of Fees

Fee may be paid by cash, check or credit card.

When writing a check to LACC, please note your chorister's name and a brief description of the purpose in the memo section of the check.

Tuition and tour payments are delinquent one week after the due date. A \$10 fee will be charged for a late payment or a returned check.

The Chorus prepares and budgets for each season based upon the number of children accepting the invitation to join the Chorus. The full tuition amount for the year is due and payable even if a child does not complete the season. By signing the Tuition Agreement Form, the parent or guardian agrees to adhere to this policy.

D. Financial Assistance

Financial assistance is available on a need basis to help LACC families cover the costs of their chorister's participation in LACC programs.

Financial assistance awards are limited to the funds available each year.

Financial assistance applications are reviewed in confidence and need-based awards are granted at the discretion of the Finance Committee of LACC's Board of Directors. Anonymity of the applicant and confidentiality of financial information are maintained throughout the review process and thereafter. LACC's Executive Director and Business Manager communicate financial assistance decisions.

To qualify for financial assistance, families must adhere to the following procedures:

- ◆ Financial assistance applications for the upcoming season are due to the LACC Business Manager:
 - ◆ June 1st for returning choristers
 - ◆ One week after the end of auditions for auditioning children
 - ◆ October 1st for tours
 - ◆ November 1st for day trips
- ◆ Late applications will not be accepted.
- ◆ Choristers not adhering to LACC Chorister and Parent Handbook policies may be subject to disciplinary action including the loss of their financial assistance.

E. Rehearsal Procedures

Parents are encouraged to bring choristers to rehearsal early so they can sign in and be in their seats and ready to sing promptly at the scheduled time. At dismissal time, choristers meet their parents in the dismissal area designated for their group. Specific dismissal areas are used to assure the safety of each child.

If parents wish to visit during a rehearsal, please let a staff member know in advance. To ensure that the artistic goals of each rehearsal are met, it is vital that the Directors are able to plan how and when visitors can most appropriately be accommodated. By calling at least a day before the rehearsal, LACC staff can let you know which rehearsal would be the best for you to attend.

Office assistance is provided during LACC rehearsals and parents are welcome to stop by to ask questions, obtain information or make payments. *We ask your full cooperation in not using the office as a waiting or lounge area during rehearsals — this will help LACC staff maintain the professionalism of the office.*

F. Trips and Tours

Each chorister may be invited by his/her conductor to tour with his/her choir to either a domestic or foreign locale during his/her time as a member of LACC. Individual choristers' families are responsible for the costs of touring. Travel expenses for touring choristers include a pro-rata share of the travel expense of whatever professional staff is necessary for the tour, as determined by the Tour Committee. Recipients of scholarship funds will be determined by the Executive Director, Artistic Director, and the Board Finance Committee.

In general, longer trips are reserved for the Concert Choir. Opportunities for weekend or day trips are scheduled for the Intermediate, Apprentice and Preparatory Choirs as deemed appropriate by the Artistic Director. Before any trip, the staff will communicate with parents about the destination, costs and anticipated activities.

Parents may apply to be tour chaperones. Chaperones pay their own way on tours and are assigned a small group of choristers to oversee. Chaperones do not supervise their own children on tour. Other than chaperones, parents do not accompany tours. They are welcome to attend public concerts during the tour, but may not participate in other tour activities or take their children away from the group during the tour. Parents who plan to meet children at the end of a tour to continue with a family vacation must meet with the Chorus Manager well in advance of tour departure to arrange for the child's safe transfer.

Touring is an important component of LACC's program; hence each chorister is expected to travel with his or her choir. The Artistic Director, however, reserves the right to indicate a chorister's ineligibility for a trip based on observation of the chorister, including both musical readiness and general conduct and deportment.

G. Transportation

If rehearsals or performances are at distant locations, arrangements may be made by LACC for transportation via carpool or chartered bus from Pasadena. All parents, staff, or volunteers who drive choristers to outside rehearsals, events or performances must complete the LACC Automobile Transportation Insurance Coverage Information Form and demonstrate proof of insurance, as well as an acceptable driving record.

H. Contracted Performances

Some of the organizations that invite the Chorus to perform for or with them pay fees or make contributions to the Chorus. Each year a portion of LACC's operating budget is derived from these fees or contributions. For such performances, the children are considered members of the Chorus, not employees of the Chorus — that is to say, choristers are not paid by LACC for performing, nor does the Chorus serve as an agent for outside employment of individual choristers.

I. Work Permits

Choristers are required by California State Law to have work permits for some of LACC's contracted performances, such as those at the Music Center. The permit indicates that the child is doing sufficiently well in school to be allowed to work outside of school. When permits are needed, LACC staff will provide parents with work permit applications. Parents are requested to obtain school signatures and return the applications promptly. Work permits are renewable every six months.

J. Recordings and Photography

The Chorus requests that parents exercise the same courtesy towards LACC as they would toward any other performing group with regard to cameras, camera phones, and recording equipment. **Such equipment is not permitted in the auditorium during a performance because it is distracting to the performers, the Directors, and others in the audience.**

LACC is committed to educating our choristers and our constituency both in concert decorum and in the importance of complying with provisions of laws that protect rights of composers and publishers. LACC will periodically produce recordings of the Chorus' performances, but only after securing required licenses and paying royalties due the publishers of the material recorded.

K. Social Media Guidelines

The following guidelines govern the publication of and commentary on social media of any content relating to Los Angeles Children's Chorus. Their purpose is to protect and preserve LACC's esteemed brand and reputation and to ensure that social media is used for the betterment and advancement of the diverse and growing LACC community. Social media encompasses any facility for online publication and commentary, including without limitation blogs, wikis, and social networking sites such as Facebook, LinkedIn, Twitter, Flickr, and YouTube.

- ◆ Publication and commentary on social media carries similar obligations to any other kind of publication or commentary, therefore **all uses of social media must follow the same behavioral standards outlined in Part VI, section D of the Chorister Handbook.**
- ◆ Only approved photographs, video and audio recordings should be used as social media content. It is critical that you respect all laws governing copyright and fair use or fair dealing of copyrighted material owned by others, including LACC's own copyrights and brands.
- ◆ We ask that you demonstrate good judgment and be sure to make it clear that the views and opinions expressed are yours alone and do not represent the official views of LACC. Please be certain to contact the office prior to posting if you do not know if your chosen content meets LACC standards.

L. Chorus Fundraising

Los Angeles Children's Chorus undertakes an annual fundraising campaign that provides for approximately half of the Chorus' annual operating expenses. Donors include individuals from among LACC's parent community, alumni families, the Board of Directors, staff, and the community at large. These generous friends contribute to LACC with the understanding that their privacy will be respected and that no unauthorized requests for assistance will be put forward by LACC's membership. Respecting donor privacy is fundamental aspect of responsible stewardship; therefore, LACC discourages any approaches of its donors by choristers or their families for the purpose of soliciting funds, recommendations, or other favors. To do so compromises LACC's good will with its donors and its ability to raise crucial, program sustaining funds.

Earned income, including tuition, will account for only about half of the funding needed for the continued operation and growth of the Chorus during the 2011 - 2012 Season. LACC's Development Department is responsible for raising the balance of the resources needed to sustain the Chorus' artistic programs and general operations (such as office space, staff salaries, marketing materials and other day-to-day essentials). LACC will raise these funds from a number of sources, including generous individuals (through such fundraisers as LACC's traditional holiday Poinsettia Campaign, our periodic direct mail appeals, and the annual spring Benefit), institutional funders such as foundations (grants) and corporations (sponsorships), and public agencies.

LACC looks to its generous chorister families to support its annual operations in a number of ways: by supporting the choral music education their children receive through LACC's comprehensive music program and rehearsal/performance schedule, as well as **through support of its annual fund.** Gifts may be made in the form of outright gifts or pledges payable over up to three years. LACC accepts gifts in the form of cash, check, credit card (Visa, MasterCard, AMEX, and Discover), stock transfers, employer matching gifts, and other means.

Also, purchases you are already making could benefit LACC through its partnership with eScrip or Amazon.com. Perhaps you'd like to support LACC's future with an endowment or a planned gift. Please check with LACC's Development Department for advice on the many giving options available. LACC is honored to acknowledge its generous donors in writing in its annual Winter and Spring concert programs and other LACC materials, as applicable.

Thank you in advance for your support of LACC's dynamic development program in 2011 - 2012!

VIII. LACC Structure and Staff

A. Chorus Organizational Structure

Los Angeles Children's Chorus is an independent, 501(c)(3) nonprofit organization that is governed by a Board of Directors which oversees policy development, fundraising, financial management, and works with the artistic and administrative staffs to support the mission and goals of the organization. The organizational structure is shown in Figure A on the following page.

Los Angeles Children's Chorus artistic staff consists of:

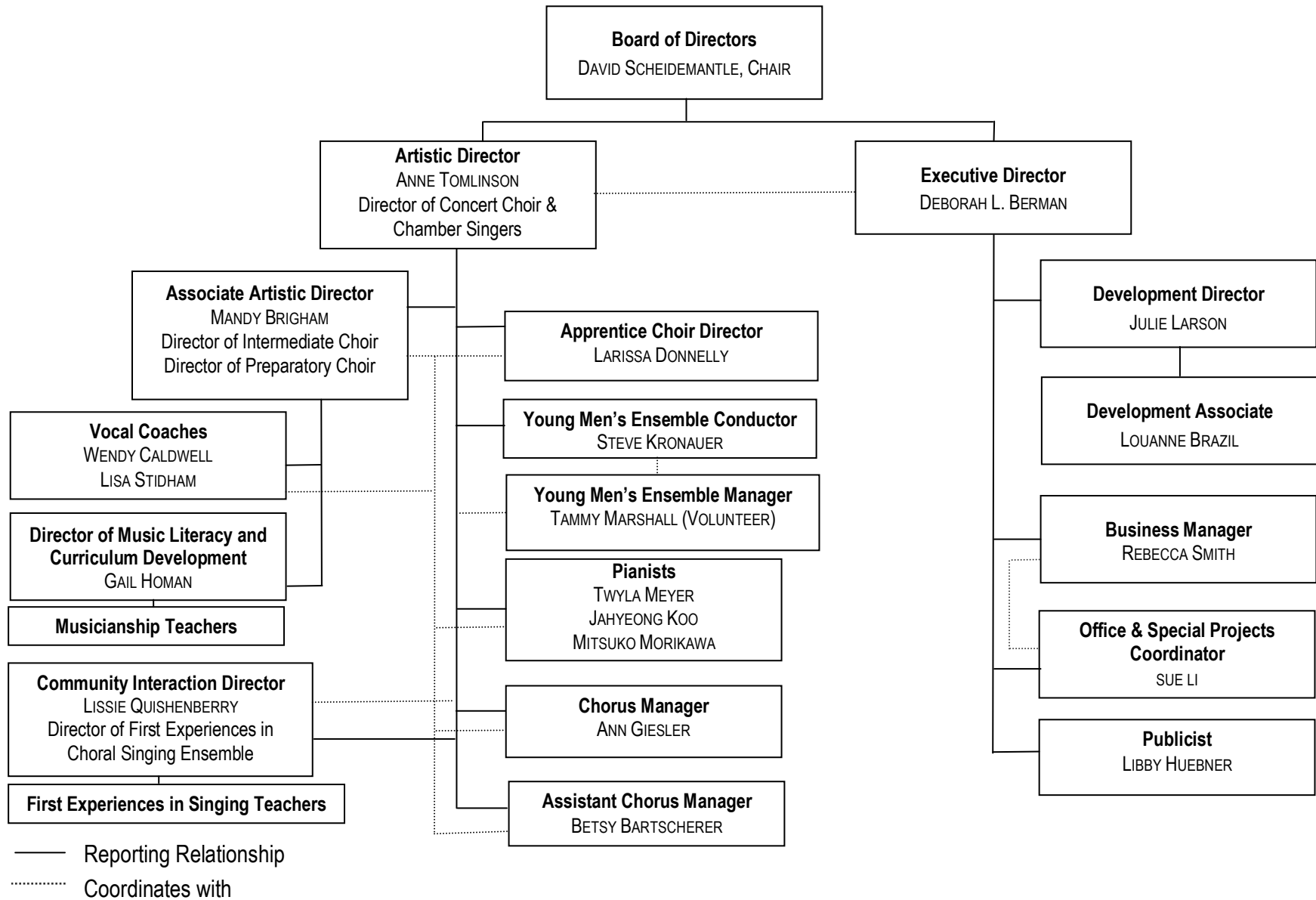
- ◆ The Artistic Director, who is responsible for the overall educational, programmatic and artistic leadership of the Chorus, and conducts Concert Choir and Chamber Singers.
- ◆ The Associate Artistic Director, who assists the Artistic Director with musical and administrative duties, and conducts the Intermediate Choir and the Preparatory Choir.
- ◆ The Apprentice Choir Director, who conducts the Apprentice Choir
- ◆ The Community Interaction Director, who coordinates the Chorus' outreach program, conducts the First Experiences in Choral Singing ensemble, and coordinates the First Experience in Singing classes.
- ◆ The Young Men's Ensemble Conductor, who directs a choir for boys with changing voices.
- ◆ Pianists, who accompany in rehearsals and perform with all six choirs.
- ◆ Vocal Coaches, who assist the Directors in individual voice assessment and development of improved vocal technique.
- ◆ The Director of Music Literacy and Curriculum Development, who determines the curriculum for all levels of musicianship classes and assists the musicianship teachers in program implementation.
- ◆ Musicianship Teachers, who provide instruction in the fundamentals of music theory and sight-singing.
- ◆ First Experiences in Singing Teachers, who teach LACC's classes for six and seven year olds.

The administrative staff includes:

- ◆ The Executive Director, who is responsible for overseeing all administration at LACC including fundraising, marketing, Board of Directors facilitation and support, contracts, publicity, public image, maintaining and cultivating relationships with outside arts organizations and the community, and management of the administrative support staff.
- ◆ The Director of Development, who plans and coordinates fundraising activities including the submission of grant applications, donor relations, special events, and the LACC Parent Guild and Alumni Council.
- ◆ The Chorus Manager and Assistant Chorus Manager, who coordinate all logistical aspects of rehearsals, performances and tours.
- ◆ The Business Manager, who is responsible for information systems, membership records, purchasing, billing, accounting, payroll, and the music library.
- ◆ The Development Associate, who supports the Director of Development in achieving the Chorus' development objectives.
- ◆ The Office and Special Projects Coordinator, who provides general support services and coordination of LACC's special projects.

Parent volunteers also support the Chorus by accepting responsibility for a broad range of important projects and activities. At the beginning of each new season, all chorister parents are invited to indicate which of their special talents they would like to share with LACC in a volunteer capacity and in which areas they would most enjoy assisting. Staff and volunteer leaders then call on them throughout the year as assistance is needed.

Figure A: 2011 - 2012 Los Angeles Children's Chorus Organization Chart



B. Artistic Staff Bios

Anne Tomlinson, now in her 16th season as **Artistic Director of Los Angeles Children's Chorus**, oversees the educational and artistic development of the Chorus and conducts LACC's Concert Choir and Chamber Singers. She is also Children's Chorus Mistress for Los Angeles Opera. During her tenure, she has prepared children for major operatic works including the world premiere of Tobias Picker's children's opera *Fantastic Mr. Fox* based upon the story by Roald Dahl. In these productions, Ms. Tomlinson has worked with renowned conductors Plácido Domingo, Andrew Litton, and Julius Rudel among many others. She has also prepared children's choirs for Esa-Pekka Salonen, Carlo Rizzi, and Marin Alsop in Los Angeles Philharmonic performances of Stravinsky's *Persephone*, John Adams' *El Niño*, Mahler's Symphony No. 3, Orff's *Carmina Burana* and a fully staged production of Leonard Bernstein's *Mass* at the Hollywood Bowl. Los Angeles Master Chorale performances include Orff's *Carmina Burana* under the direction of Grant Gershon and Paul Salomonovich, as well as the world premiere of Christopher Rouse's *Requiem* under Grant Gershon.

Ms. Tomlinson's film work includes the 2002 Academy Award nominated documentary *Sing!* which chronicles a year in the life of LACC and appears frequently on public television in Los Angeles. Her live broadcast work includes the January 2005 Chamber Singers performance on NPR's nationally syndicated program "From the Top." Ms. Tomlinson is a frequent presenter at symposia, workshops and festivals. She holds a Bachelor of Music degree from Oberlin College Conservatory of Music and Master's degree in conducting from Northwestern University where she studied with Margaret Hillis. Ms. Tomlinson is the 2000 recipient of the Gold Crown Award for Music Education awarded by the Pasadena Arts Council, the 2001 Power of One Award awarded by Facing History and Ourselves Foundation, and the 2006 Educator of the Year Award given by the Harvard-Radcliffe Club of Southern California.

Mandy Brigham, Associate Artistic Director, is in her tenth season with the Los Angeles Children's Chorus. In addition to conducting LACC's Intermediate and Preparatory Choirs, she is responsible for overseeing the organization's musicianship and vocal coaching programs. She has prepared the chorus for collaborations with the Los Angeles Philharmonic, the Hollywood Bowl Orchestra, and the Long Beach Symphony, and has assisted with the preparation of the chorus for numerous Los Angeles Opera productions, including *Carmen*, *La Bohème*, *Tosca*, *Otello*, *Hansel and Gretel*, and *Grendel*, under the baton of conductors including Plácido Domingo, James Conlon, Kent Nagano, and Alan Gilbert. In Spring 2010, she prepared the chorus and soloists for Santa Monica College's production of *An American Tragedy* with the composer in residence, Tobias Picker, and she assisted with the preparation of the chorus for the July 2010 performance of *Carmen* at the Hollywood Bowl.

Ms. Brigham holds a Bachelor of Music degree from the University of Southern California, where she also did graduate study. Her teachers there included James Vail, Morten Lauridsen, and Charles Hirt. Other significant teachers include Paul Salomonovich, with whom she sang for many seasons, and Kyra Humphrey. In addition to her work at LACC, Ms. Brigham is the vocal music teacher at Balboa Boulevard Magnet School in Northridge.

Larissa Donnelly, Apprentice Choir Director, joined LACC's artistic staff this season as conductor of the Apprentice Choir. Donnelly has been involved with children's choirs since childhood when she joined, at the age of eight, the renowned Glen Ellyn Children's Chorus, now known as Anima, with which she sang for seven years. Donnelly holds a Bachelor of Music Education from Michigan State University, where she studied voice and piano, graduating with honors, and a Master of Music Education and Choral Conducting from Florida State University. In addition, she earned Level I and II certification from Doreen Rao's Choral Music Experience Institute for Choral Teacher Education at the University of Toronto. Donnelly has taught in both public and private schools across the country, including in Garland and San Antonio, Texas, Atlanta, Georgia, and Paramount, California, with a focus on middle and high school choirs. She also worked with the famed Michigan State Children's Chorus and the Virginia Children's Chorus, as well as HOLA, Heart of Los Angeles. A professional singer, most recently she was a core member of the Virginia Symphony Chorus and has also served as an accompanist for numerous choral ensembles. She resides in Lakewood, CA with her husband, Joe, and their two sons, Ian and Jack.

Dr. Steven Kronauer, Young Men's Ensemble Conductor, is tenor, conductor, and voice teacher. He started his singing at the Bavarian State Opera in Munich Germany. During his ten year engagement, he studied with many

noted singers. Dr. Kronauer was a soloist with the Bavarian State Opera for television broadcasts, CD recordings, and live radio performances, appearing with Renee Fleming, Kurt Moll, and many others. He performed the role of *Smy* in a world premiere of the German opera *Peter Pan*, by Willfried Hiller, directed by the world famous stage director August Everding. This performance was recorded and distributed by Deutsche Gramophone. Dr. Kronauer has sung as a soloist at the Cologne Philharmonic, and with the Munich Philharmonic in Germany. He has sung more than 100 performances of *Carmina Burana* internationally. Since his return from Europe Dr. Kronauer has been a soloist with many organizations, including the Angeles Chorale in Los Angeles, the Los Angeles Bach Society and the New York City Master Chorale. He has been featured in an hour interview with Gene Parrish at KCSN playing recordings of his performances and discussing his career.

Dr. Kronauer holds a doctorate from UCLA in operatic and choral conducting under the direction of Donald Neuen and William Vendice, respectively. He worked with Donald Neuen as assistant conductor for the UCLA Chorale and with Maestro Vendice as the assistant conductor of the UCLA Opera, where he conducted performances of Ravels opera *L'enfant et les Sortilèges*. Dr. Kronauer holds two masters degrees, one in Vocal Performance and one in Choral Conducting from the University of Michigan.

As a teacher of voice he has worked at UC Irvine, and has served as a voice teacher and music director of the Opera at UCLA for two years. Currently Dr. Kronauer teaches at CSU Long Beach at the Bob Cole Conservatory of Music teaching voice and German diction.

Lissie Quishenberry, Community Interaction Director, received her Bachelor of Arts degree from La Sierra University, where she studied Elementary Education and Music. After years of classroom teaching, she received her certification in both the Orff and Kodaly approaches to music education, and enjoys applying both in many classroom and choir settings. She is currently studying at Cal State LA to receive her secondary music teaching credential, followed by a Master's degree in music education.

Wendy Caldwell, Vocal Coach, has been a choral singer since the age of eight and has performed as a vocal soloist in opera, oratorio and in concert. She has accompanied and coached singers at Acadia University (Canada), University of Illinois at Chicago, Pasadena City College, Caltech, and CSU Long Beach. Ms. Caldwell conducted children's choirs at San Marino Community Church for five years and is currently Director of Music at Altadena Community Church. She resides in Pasadena with her husband, Don, and her two daughters, Serenity (LACC alum) and Caetlyn.

Lisa Stidham, Vocal Coach, has sung in opera, concerts and recitals in the United States, Europe, Australia and South America. Her performance on New World Records of Stephen Hartke's *Sons of Noah* was hailed by New York Times' critic Anthony Tomassini as "a tour-de-force." She holds a DMA in Vocal Performance from the University of Southern California, and MM in Vocal Performance from the San Francisco Conservatory of Music. Ms. Stidham teaches voice and related courses at USC, Scripps College, and CSULA, and maintains a private voice studio in Glendale.

Gail Homan, Director of the Music Literacy Program and Curriculum Development, has taught general music and choir in public and private schools in the Los Angeles and San Francisco Bay areas. She currently teaches K-8 music at St. Philip the Apostle School, as well as private piano lessons. In the San Francisco area, Ms. Homan owned a music school servicing 135 families a year, delivering a Kodály-based music curriculum for children ages one through eight years. Ms. Homan graduated from the Music Conservatory of the University of Missouri and completed Level III Kodály certification at Holy Names University in Oakland, California. She holds a Masters in Music Education with Kodály emphasis from Capital University in Columbus, Ohio.

Twyla Meyer, Pianist, accompanies for Concert Choir and Chamber Singers. She holds a B.F.A. in Piano Performance from the University of Minnesota and an M.M. in accompanying (with honors) from USC. Ms. Meyer has been staff accompanist and adjunct keyboard faculty at CSU Los Angeles since 1980 and has held similar positions at Pasadena City College and Occidental College. A specialist in 20th century chamber music, Ms. Meyers is a founding member of the Matrix Chamber Ensemble performing concerts in New York and on the West Coast. She

has been on the faculty at the Idyllwild School of Music and the Arts and a featured performer with the Southern California Brahms Festival. Ms. Meyer has recorded for Artel Records with heldentenor Gary Lakes.

Jahyeong (Jackie) Koo, Pianist, accompanies for the Intermediate and Preparatory Choirs, is the founder of the Valley Philharmonic Orchestra and member of the LA Trio, is originally a graduate of the Sun-Hwa Performing Arts School in Seoul, Korea. After receiving B.M. and M.M. Degrees from the University of Northern Iowa in piano performance and an enrollment as a doctoral candidate at USC with an Accompanying Assistantship, Ms. Koo went on to win numerous piano competitions and awards both as a solo artist and as an accompanist throughout the United States, Europe, and Asia. Having been invited to perform with the Moscow Philharmonic Orchestra in Russia and the Razgrad Philharmonic Orchestra in Bulgaria, Ms. Koo performed with the LA TRIO and taught Master Classes in China, as well as performing for the International Clarinet Festival in Japan and serving as resident accompanist for the International Clarinet and Saxophone Festival in Beijing, China. A California State University, Los Angeles, Adjunct Professor of Music from 2004-2009, Ms. Koo is a member of the MTNA and SYMF, and currently accompanies the Los Angeles Children's Chorus, the Youth Choirs at All Saints Church, as well as performing as staff accompanist at Glendale City College, Pasadena City College and guest lecturer at California State University, Northridge, California.

Mitsuko Morikawa, Pianist, accompanies for the Young Men's Ensemble and the Apprentice Choir, has been an active soloist, accompanist and chamber musician throughout the world, has recorded music for the New World Records label, and has been featured on radio programs in the United States and Japan. She has served on the faculties at the Meadowmount School of Music, Oberlin College Conservatory, the Oberlin Flute Institute, Baldwin Wallace College Conservatory and the ENCORE School of Strings. In 2010 Ms. Morikawa has served as an official accompanist for the National Flute Association Annual Convention and is currently working as an accompanist at Santa Monica College. Ms. Morikawa holds a Bachelors of Music in piano performance from the Toho School of Music, Japan, an M.M. in piano performance from the Manhattan School of Music, a Professional Studies Certificate in piano performance from The Cleveland Institute of Music and a D.M.A. in Keyboard Collaborative Arts at the University of Southern California. Some of Ms. Morikawa's teachers include Alan Smith, Norman Krieger, Sergei Babayan, Cheng-Zong Yin, Paul Schenly, Sara Davis Buechner and Hisako Ueno.

C. 2011 - 2012 Board of Directors

David R. Scheidemantle, Chair	Eileen Stueck Leech
Joanne Crawford-Dunér, President/Chair Elect	Vena Bennett Luthey
Jennifer C. Terry, Secretary	Dianne M. Magee
Rick Roberts, Treasurer	Sally Neely
Mary Blodgett, Vice Chair of Development	Jennifer Harris Sliskovich
Molly Connelly	Monica H. Toumani
Katherine Kavich	Norma J. Williams, JD

D. Los Angeles Children's Chorus Staff

1. Artistic Staff

Anne Tomlinson, Artistic Director
Mandy Brigham, Associate Artistic Director
Larissa Donnelly, Apprentice Choir Director
Steve Kronauer, Young Men's Ensemble Conductor
Lissie Quishenberry, Community Interaction Director and Musicianship Teacher
Gail Homan, Director of Music Literacy Program and Curriculum Development
Twyla Meyer, Concert Choir and Chamber Singers Pianist
Jahyeong Koo, Intermediate and Preparatory Choir Pianist
Mitsuko Morikawa, Apprentice Choir Pianist
Wendy Caldwell, Vocal Coach
Lisa Stidham, Vocal Coach
Ashley Ciolino, Musicianship and First Experiences in Singing Teacher
Charles Horton, Musicianship Teacher
April Johnson, Musicianship and First Experiences in Singing Teacher
Patrick Johnston, Musicianship Teacher
Faith Kenton, Musicianship Teacher
Leck Lee, Musicianship Teacher
Luis Ramos, Musicianship Teacher

2. Administrative Staff

Deborah L. Berman, Executive Director
Julie Larson, Director of Development
Rebecca Smith, Business Manager
Ann Giesler, Chorus Manager
Betsy Bartscherer, Assistant Chorus Manager
Tammy Marshall, Young Men's Ensemble Manager
Louanne Brazil, Development Associate
Sue Li, Office and Special Projects Coordinator
Libby Huebner, Publicist

Los Angeles Children's Chorus
CONTACT INFORMATION
2011 - 2012 Season

585 East Colorado Boulevard, Pasadena, California 91101
Telephone: 626.793.4231 | Fax: 626.793.0173
info@lachildrenschorus.org | www.lachildrenschorus.org

Administrative Office Hours:

Monday - Friday: 9:30am - 5:30pm
Saturday & Sunday: Closed

Extended Office Assistance during Rehearsals:

Sunday: 4:00pm - 8:00pm
Monday - Tuesday: 5:30pm - 8:00pm

Staff Contact Information:

<u>Ext</u>	<u>Name</u>	<u>E-mail</u>
10	General Mailbox	info@lachildrenschorus.org
10	Sue Li , Office & Special Projects Coordinator (General Information & Inquiries)	sli@lachildrenschorus.org
11	Becky Smith , Business Manager (Finance & Library)	becky@lachildrenschorus.org
12	Louanne Brazil , Development Associate	lbrazil@lachildrenschorus.org
13	Betsy Bartscherer , Assistant Chorus Manager (Absences, Rehearsals)	betsy@lachildrenschorus.org
14	Annie Giesler , Chorus Manager (Scheduling, Absences, Rehearsals)	anng@lachildrenschorus.org
15	Anne Tomlinson , Artistic Director (Dir. of Concert & Chamber Singers)	anne@lachildrenschorus.org
16	Deborah L. Berman , Executive Director	dberman@lachildrenschorus.org
18	Julie Larson , Director of Development	jl Larson@lachildrenschorus.org
19	Larissa Donnelly , Apprentice Choir Director	lesiegel77@yahoo.com
22	Gail Homan , Director of Music Literacy & Curriculum Development	gailyhoman@yahoo.com
23	Mandy Brigham , Associate Artistic Director (Dir. of Intermediate, Dir. of Preparatory)	mandybrigham@earthlink.net
N/A	Steven Kronauer , Young Men's Ensemble Conductor	singingsteven@aol.com
N/A	Lissie Quishenberry , Community Interaction Director	lissie@crazyladymusic.com

Handouts:

Handouts are available online from LACC's website in order for you to keep up-to-date on important information. Go to lachildrenschorus.org, then select the "Members" page. The password is **handouts**.

IX. Index

Attendance	11	LACC Board of Directors	26
Attendance probation	12	Mission Statement.....	5
Excused Absences.....	12	Musicianship Classes	7
Mandatory Rehearsals.....	12	Performances	8
Nr allowed Absences	11	Concert Preparation and Department.....	14
Reporting Absences.....	12	Other Performances	8
Retreat.....	12	Preparatory Choir	8
Tardy policy	12	Professional Performance Opportunities.....	9
Behavior Agreement.....	13	Spring Concerts.....	8
Choir placement.....	5	Winter Concerts.....	8
Chorister Safety and Well-Being.....	17	Progress Reports	8
Cell Phones	13	Rehearsals	<i>also see Attendance</i>
Rehearsal dismissal	8	Dress Code	13
Chorus Organizational Structure.....	21	Missed rehearsal	10
Contact Information	5	Schedule	7
Costs	17	What to bring to rehearsal.....	7
Financial Assistance	18	Retreats.....	8
Other Costs	17	Social Media Guidelines	20
Payment of Fees	18	Staff.....	23
Tour and Day Trip	17	Administrative Staff.....	26
Tuition Fees.....	17	Artistic Staff.....	26
Electronic Device Policy	13	Turning in Paperwork, Forms, and Payments	10
First Experiences in Singing Program	7	Uniforms	
Fundraising	20	Casual Uniform	15
Handouts		Dress Uniform.....	14
Distribution.....	10	Used Uniforms	15
Purpose	10	What to Wear When	15
Web Access.....	10		